



GELIQUE

CATALOGUE

Flower Girl
2019-2020

HOW IT WORKS:

STEP 1: MEASURE THE BUST OF THE LITTLE ONE

Take the little one's measurements and see which age group she best fits in.

For a looser fit order 1 size up.

Length is the only measurement we can change with flower girls dresses

STEP 2: CHOOSE YOUR FAVORITE STYLE

All our Flower Girl dresses are made as a set range only but your colour combinations are all up to you.

STEP 3: CHOOSE YOUR COLOUR

With our wide variety of colours, choose which combination best suits you.

STEP 4: TAKE LENGTH MEASUREMENT

Don't like the length of the dress?

All dresses and skirts can be made according to customized lengths.

SIZING CHART

Choose a size closest to the little one's measurements below

Bust	Under Bust	Waist	Short Length from under bust	Long Length from under bust	Short Length from waist	Long Length from waist
0 - 3 mth						
39-42cm	39-42cm	39-41cm	35cm	44cm	32cm	41cm
3 - 6 mth						
43 - 45cm	43 - 45cm	42-44cm	40cm	48cm	36cm	44cm
6 - 12 mth						
46 - 49cm	46 - 49cm	46 - 48cm	42cm	50cm	37cm	45cm
1 - 2 yrs						
50 - 53cm	50 - 53cm	49-52cm	48cm	68cm	43cm	63cm
3 - 4 yrs						
54 - 57cm	54 - 57cm	52 - 54cm	55cm	72cm	49cm	66cm
5 - 6 yrs						
58 - 61cm	58 - 61cm	54 - 56cm	61cm	80cm	54cm	73cm
7 - 8 yrs						
62 - 66cm	62 - 66cm	57 - 59cm	68cm	88cm	60cm	80cm
9 - 10 yrs						
67 - 71cm	67 - 71cm	61 - 63cm	70cm	106cm	60cm	96cm
11 - 12 yrs						
72 - 78cm	69 - 71cm	65 - 67cm	75cm	114cm	62cm	101cm
13 - 14 yrs						
79 - 85cm	72 - 76cm	70 - 72cm	80cm	122cm	65cm	107cm

HOW TO MEASURE

1) BUST

Wrap the measuring tape somewhat loosely around the fullest part of the chest (over nipples).

2) UNDER BUST

Measure under the chest area just 3 - 4cm from nipples or below the swell of the bust.

3) WAIST

While standing up straight, bend at the waist to one side. The crease is where the natural waist is located, measure there.



4) LENGTH FROM UNDER BUST

While standing up straight, measure from the under bust to the length required. Bending forward will influence measurements.

4) LENGTH FROM WAIST

While standing up straight, measure from the waist to the length required. Bending forward will influence measurements.



collection

Abigail

The Abigail Dress is a gorgeous 3/4 quarter length, all lace dress featuring a stunning cross back.

It has lace on the bodice and skirt and is finished off with a lace frill.

Try on samples not currently available in shops. Coming soon!



Arabella

Our Arabella is a minimalistic fun dress for little girls with 3 tiers of tulle forming the skirt. Long dresses have 4 tiers. The bodice is simple with tie straps to create that perfect little girl look. A dreamy and whimsical style, fighting the urge to twirl will be hard.

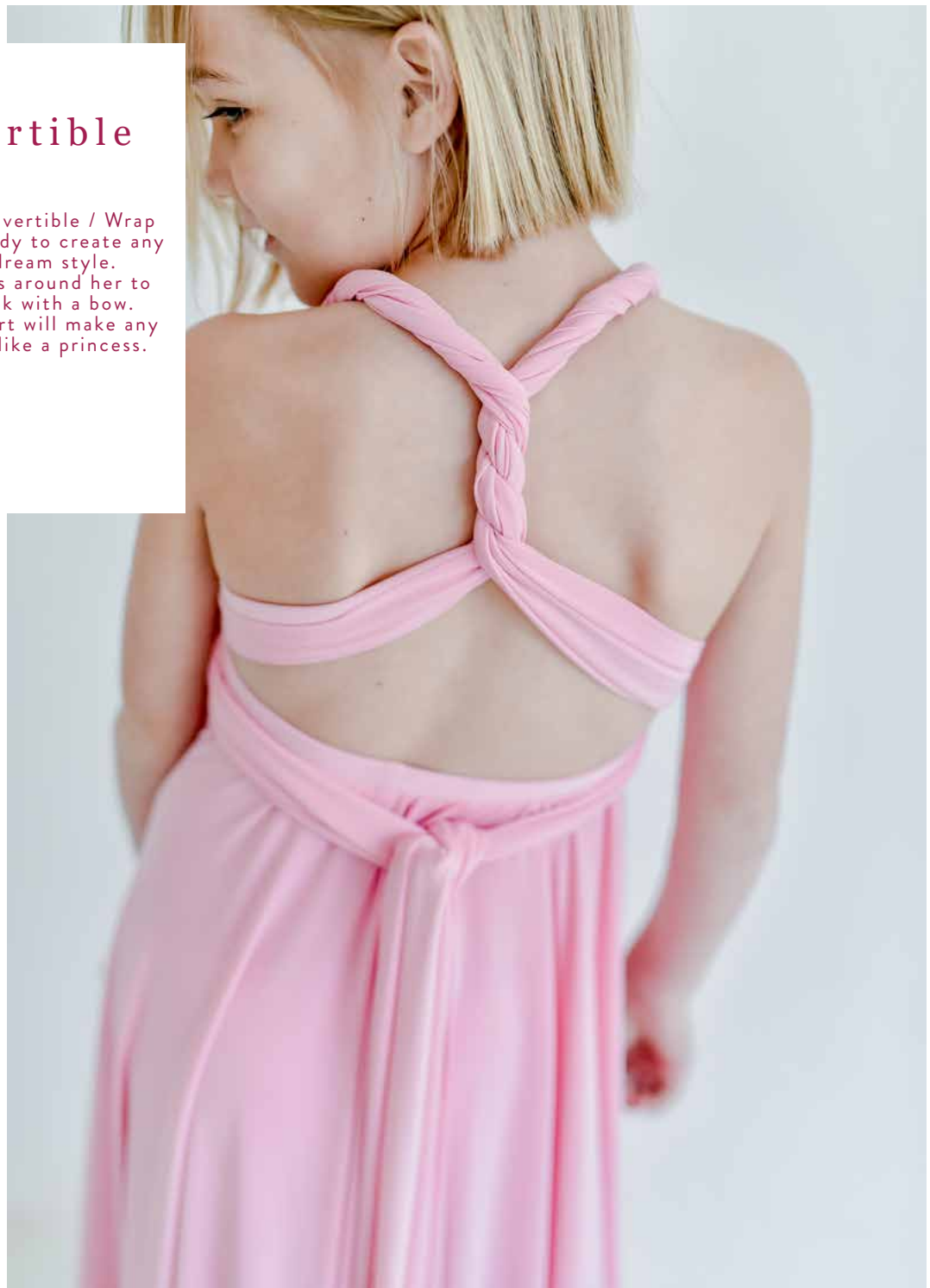
Long dresses come with 4 tiers of tulle.

Try on samples not currently available in shops. Coming soon!



Convertible

The classic Convertible / Wrap dress that is ready to create any little girls dream style. Wrap the bands around her to finish the look with a bow. A full circle skirt will make any little girl feel like a princess.



Edith

Take the Convertible and add tulle, tulle and more tulle. This dress has a fitted bodice with tulle bands that tie up onto the shoulders into gorgeous bows. A full circle tulle skirt that gathers into the under bust making it ever so elegant and soft.

Try on samples not currently available in shops.
Coming soon!





Emma

Full and dreamy! Bows on the shoulders and a full tulle skirt makes this simple dress every little girl's dream; perfect for twirls, turns and curtsies.



Try on samples not currently available in shops. Coming soon!

Juliana

This sweetheart bodice with a illusion back is finished off with a beautiful scalloped skirt. Chose any lining colour for a creative look.



Karla

Sparkles and shimmer! This is a perfect little princess dress. A tulle skirt over the lining is what every little girl dreams of.

Try on samples not currently available in shops.
Coming soon!



Katy

Soft tulle and pretty frills are the highlight of this dress. The bodice is a plain soft vention with tulle frills crossing over the back and finished off with not one but two layers of tulle skirts.

Try on samples not currently available in shops. Coming soon!



Layla

A adorable, clean look with a touch of fun in the form of ruffles added to the bottom of this A-line dress. Your little girl is going to love twirling in this dress.

Try on samples not currently available in shops.
Coming soon!



Leah

Our Leah dress is a cuter version of the adult design. Tie straps and 1 layer of tulle on the skirt is a elegant touch to make your princess feel pretty.





Lilly Ann

Sugar and spice and all things
nice.

This a fairytale dress that suits
any little princess. Casual enough
to wear all day but cute enough
to make the perfect
special occasion outfit.

Butterfly sleeves and a straight
cut skirt that gathers at the un-
der bust will make any little angel
feel like a fairy about to get lost
in gardens.

Try on samples not
currently available in shops.
Coming soon!



Mia

A beautiful bodice with two layered tulle frill that fall over the under bust into a soft flowy tulle skirt.
Tie the straps into pretty bows to finish the look off.

Try on samples not
currently available in shops.
Coming soon!



Mika

The Mika has a illusion back and sweetheart bodice. The straight cut tulle skirt creates a ruffled middle. A perfect finish to this party girl dress.



Millie

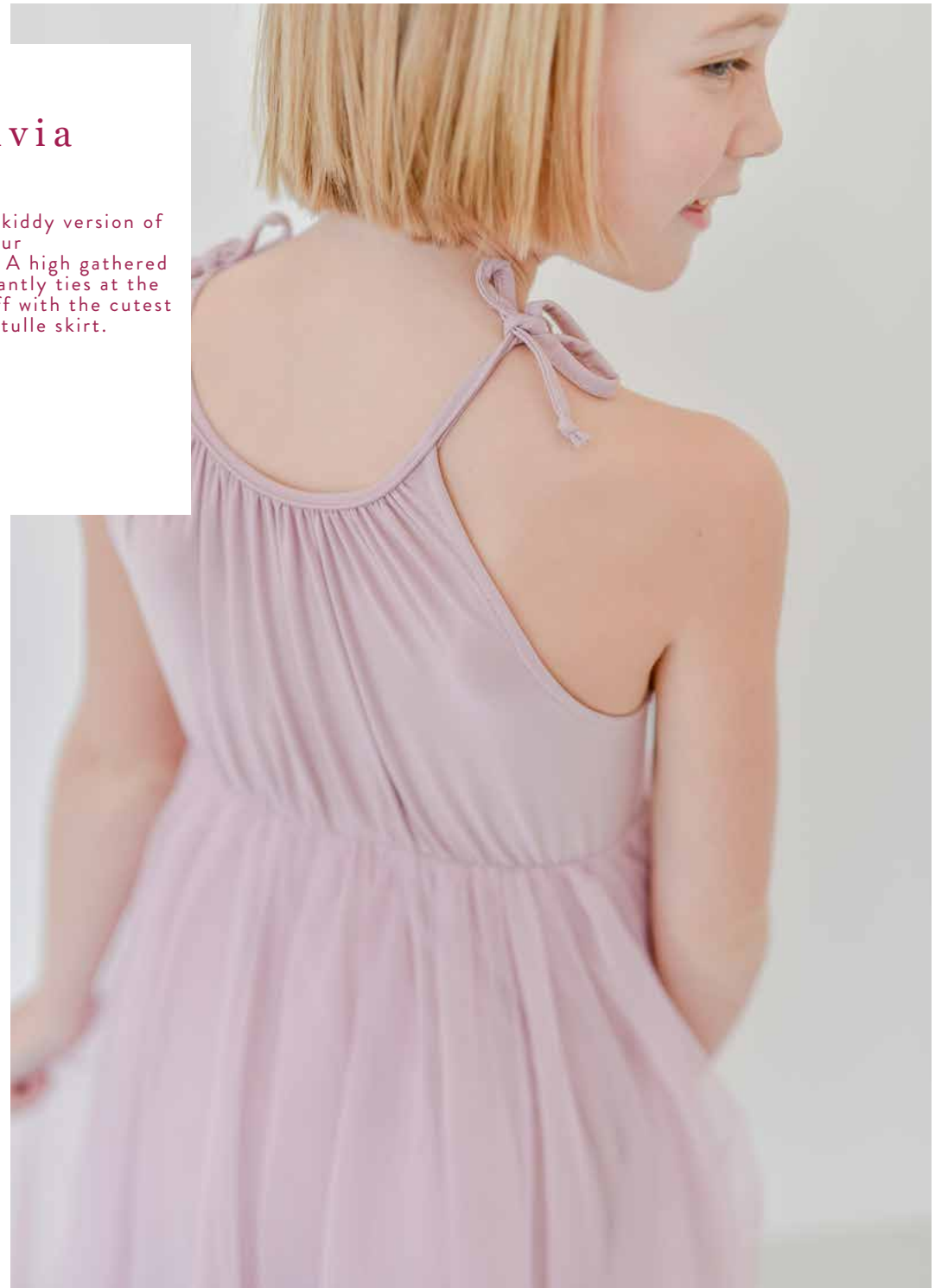
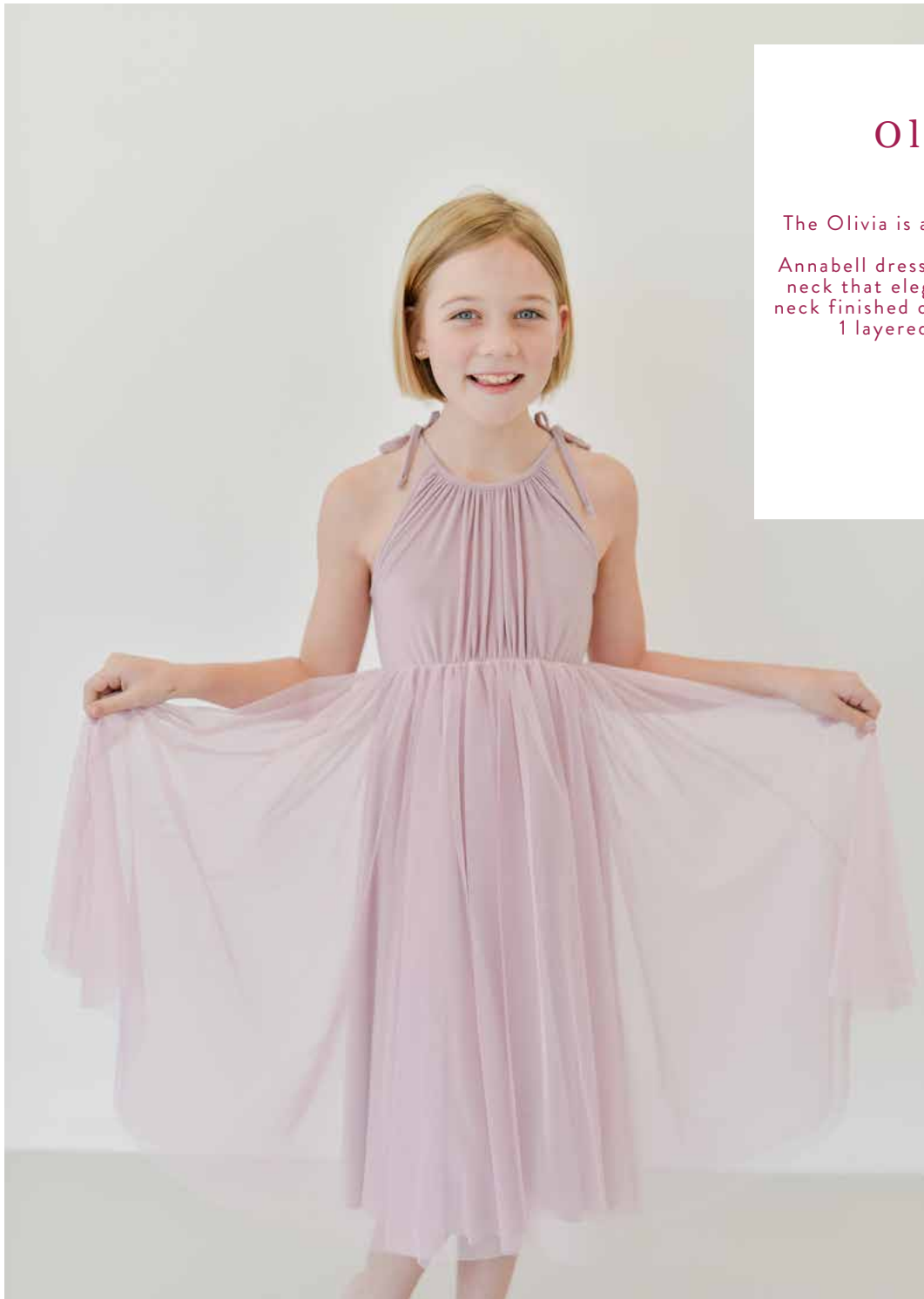
Another version of the Convertible / Wrap dress that allows multiple styles to be created. This 3 layered square cut tulle skirt creates a fairy look alike style.

Try on samples not currently available in shops. Coming soon!



Olivia

The Olivia is a kiddy version of
our Annabell dress. A high gathered
neck that elegantly ties at the
neck finished off with the cutest
1 layered tulle skirt.



Savannah

The perfect bohemian princess dress!

The Savannah has a 2 layer chiffon frill on the bodice with a whimsical full circle chiffon skirt over the lining. Tie the bows on the shoulder and your princess is ready to twirl!

Try on samples not currently available in shops. Coming soon!



Thia

The perfect little girl's dress.
Soft, fun and puffy this dress will
make any little girl not want to
take it off!
The 2 layers of tulle frills create
the ruffled full skirt ready for
dancing.

Try on samples not
currently available in shops.
Coming soon!



Sophia Skirt

A great way to create many looks.
The Sophia skirt has a full circle tulle skirt with a soft venetian lining.
Match it with any top to finish the look.



Pixie Skirt

Creating a fairy version of our Sophia skirt this Pixie Skirt has 3 layers of square cut soft tulle layered on top of each other.

Try on samples not
currently available in shops.
Coming soon!



Leah Top

The cutest top to pair with any of
our skirts.

The Leah top is a fitted bodice
with tie straps to tie into
Gorgeous bows.





Lilly Ann Top

Taken from the Lilly Ann dress this simple yet cute top with butterfly sleeves is a beautiful option for a cooler day.

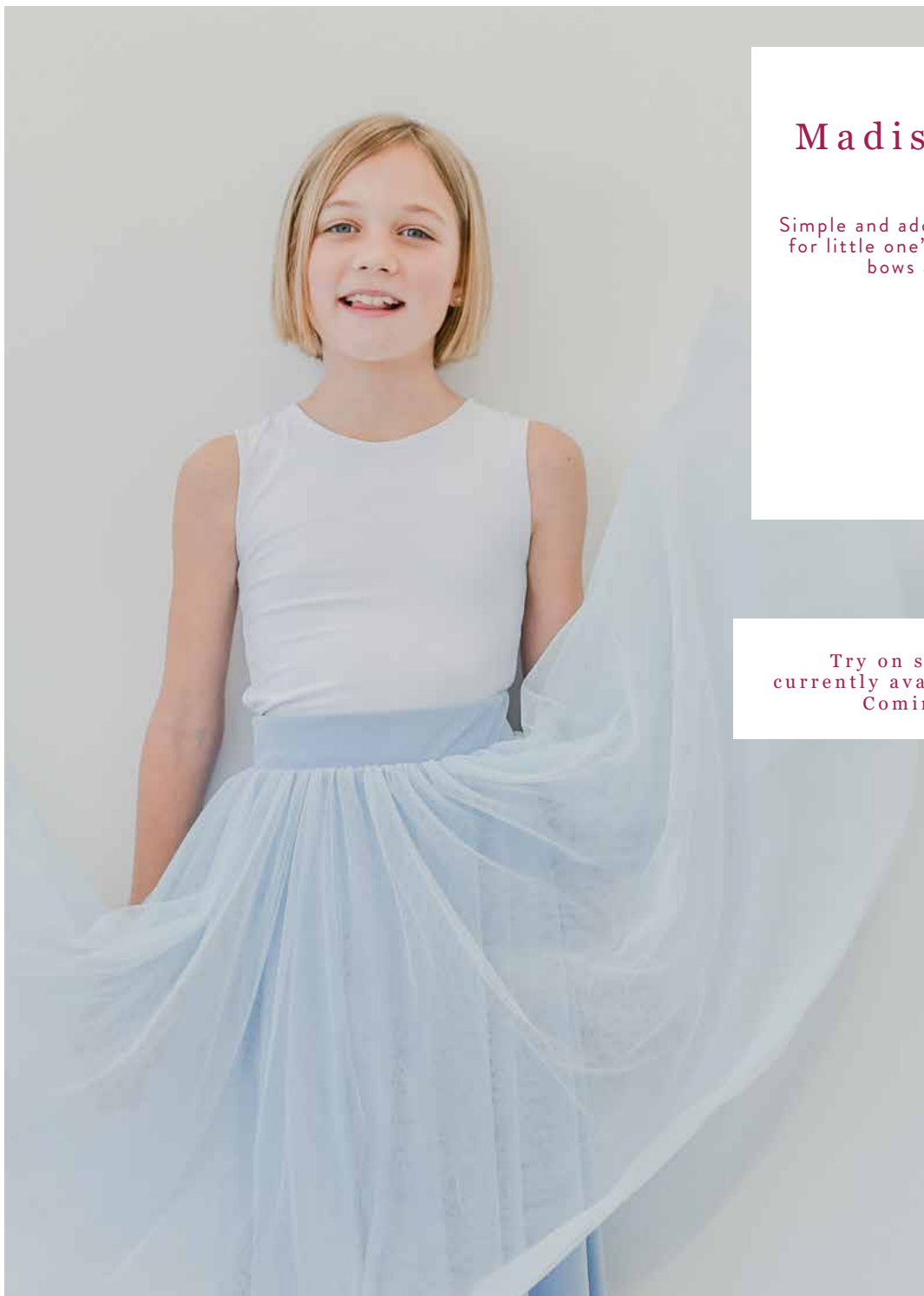
Try on samples not
currently available in shops.
Coming soon!



Madison Top

Simple and adorable top option
for little one's that don't like
bows and ties.

Try on samples not
currently available in shops.
Coming soon!



Robe

Mini me robes to match your bridesmaids.
These Robes are a adorable way to have them getting ready for the big day.

Try on samples not currently available in shops.
Coming soon!





GELIQUE

COUTURE

www.geliqueonline.com • gelique@geliqueonline.com

  [geliqueonline](#) • 082 304 7734